

SOFTWARE – HANDBOOK

WinCOM2Key

1. Overview

The software WinCOM2Key is used to transfer data from a RS232-Port to a PC as if the values were typed on a keyboard. The RS232 parameters can be changed as wanted. There are also different modes for data conversion. The data will be transferred to the program presently used.

The following program options are available:

- Load / Save / Delete from setups
- Set modus for data conversion
- Set parameters for the RS232-Port
- Choose language
- Display mode for data input and conversion
- Export all designators as a ASCII file

2. System requirements

- Computer with 200 MHz Intel or AMD
- Min 64 MB RAM
- HDD with 10 MB free space
- OS: WIN95/98/ME/NT/2000/XP

3. Installation

The program will be installed with the SETUP.EXE found on Disk 1 or CD.

3. Main Menu

File	Setup Load	Load a saved setup, consisting of parameters for the data transfer and the RS232-Port
	Setup Save	Save a setup, consisting of parameters for the data transfer and the RS232-Port
	Setup Delete	Delete a saved setup
	Setup Standard	Reset all parameters
	Exit	Close the program and save all parameters for the next program start.

Parameter	Modus	Set parameters for data input
	COM Port	Set parameters for the RS232-Port
	Language	Set the used language
Extras	?	Display copyright and program version
	Read port	Display presently read data with the conversion and format to measuring values
	Export language	Export all designators as a ASCII file



4. File menu

4.1 Setup load

Load a saved setup from the hard drive or network. This setup consists of all parameters made in the menus Parameter / Modus / COM Port. An opened setup will be displayed in the second text row from the bottom. The window used for the choice of file is Windows standard.

4.2 Setup save

Save a setup to the hard drive or network. This setup consists of all parameters made in the menu Parameter / Modus / COM Port. A saved setup will be displayed in the second text row from the bottom. The window used for saving the file is Windows standard.

4.3 Setup delete

Delete a saved setup from the hard drive or network. The window used for the choice of file is Windows standard.

4.5 Setup Standard

Reset all parameters made in the menu Parameter / Modus / COM Port or in an opened setup file.

4.6 Exit

Close the program and save all parameters.

Note: Parameters will only be save when the program is closed using File/Exit. If the program is closed using the button at the top right-hand side, all parameters will be lost.

5. Parameter menu

5.1 Modus

5.1.1 End of line

Choose between Enter / Tab / CHRS up / CHRS down to end the line after the measuring value.

5.1.2 Separation (Input / Output)

Choose between decimal point and comma as separation character. Data input and output can be chosen separately.

5.1.3 Absolute

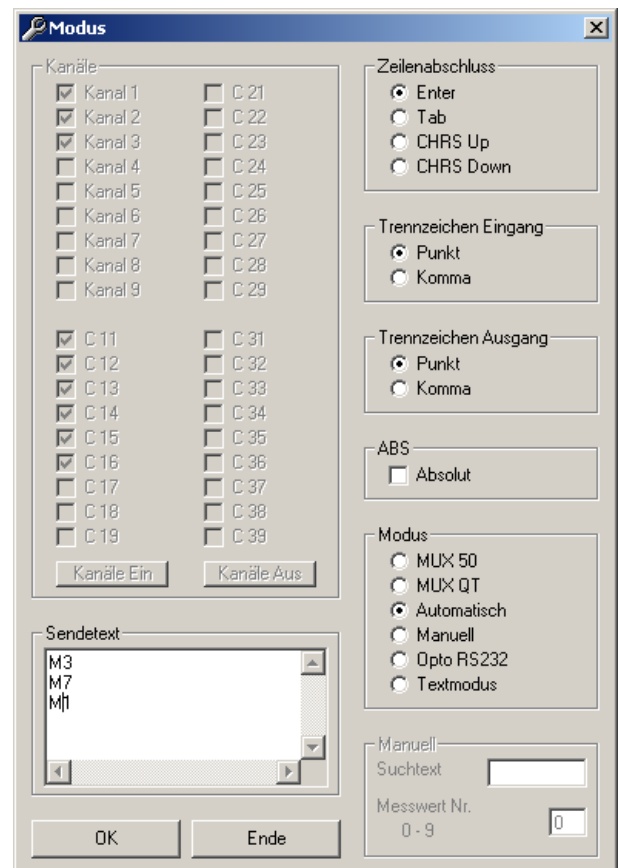
The measuring data will be shown as an absolute value (no -)

5.1.4 Modus

Choose between work modes.

5.1.4.1 MUX 50 / MUX QT

Direct support for QT-Multiplexers with MUX 50 / QT Modus. Appropriate RS232 sequences will be transferred to the multiplexer. A RS232 foot switch adapter is optional. This will make data transfer with a foot switch possible.



5.1.4.2 Automatic

The incoming measuring data will be automatically converted and transmitted. The characteristics of the data will be examined. Each line will contain one transmitted value. The end of the line must have a CR or LF.

5.1.4.3 Manual

With the manual conversion, search characters and the position of the measuring values in the line can be specified. If no search characters are specified, each line will be evaluated. The end of the line must have a CR or LF. Search characters separated with a ";" will be scoured for all search terms and separately evaluated, for example "X;Y;Z". For measuring value No.0, the next numerical value will be taken.

Example:

Search text:	"MW"	M-Value No.:	"2"
Data transfer:	"MW1 +0000.034 mm" +CR +LF	M-Value:	"0.034"

5.1.4.4 Opto RS232

The configurations will be made for Opto RS232 including the RS232 parameters.

5.1.4.5 Text mode

All characters transmitted by the RS232-Port will be transferred into the keyboard buffer.

5.1.4 Channels

The channels of the QT-Multiplexers can be turned on and off with the software.

5.1.5 Manual

Input of search text and M-Value No. in manual mode.

5.1.6 Send text

Input a send text to start a data transfer from the measuring device. The data transfer can only be started with an optionally obtainable RS232 foot switch. The end sequence of each line is always a CR + LF and will not need to be extra stated. The lines will be sent one at a time. There will be a 2,5 sec. pause time for data transfer. After the pause time or data transfer, the next line will be sent.

5.2 COM Port

5.2.1 Port

Choose the RS232-Port COM1 – COM4

5.2.2 Baud rate

Choose the baud rate 110 – 9600 Baud

5.2.3 Data bits

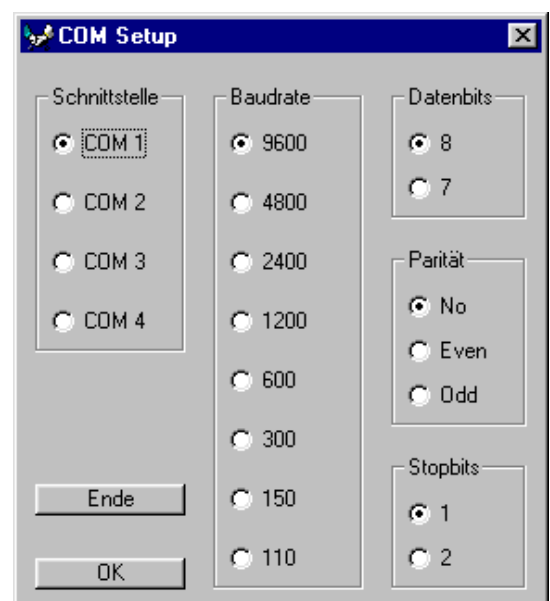
Choose between 7 or 8 data bits

5.2.4 Parity

Choose between No / Even / Odd

5.2.5 Stop bits

Choose between 1 or 2 stop bits



5.3 Language

Choose between German, English, French and Italian as the program language. The chosen language will be saved by closing the program over the menu File/ Exit.

6. Extras

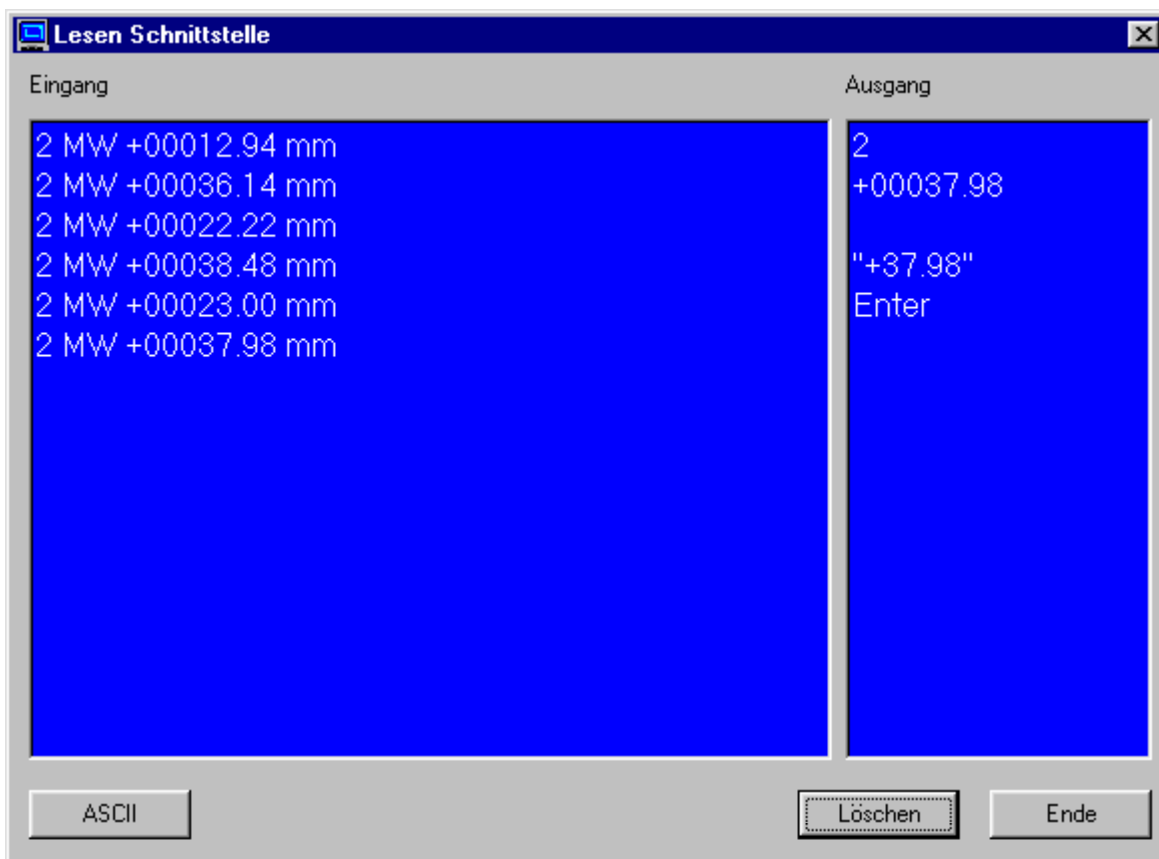
6.1 ?

Display copyright and program version



6.2 Read port

Display RS232 input data and converted measuring values.



The input field will display all read characters from the RS232-Port. With the function "ASCII" / "Text", it can be switched between the display modes. In ASCII mode, the characters will be displayed as ASCII No. and, when possible, characters. Control characters will be displayed in text, for example: "CR" "LF" "TAB". The output field displays the transmitted measuring values. A maximum of 9 measuring values can be displayed. The last value between the quotation marks is the end of line value.

6.3 Export languages

Export all designators as a ASCII file. The standard file name WCOM2Key can be changed if wanted. The file ending is TXT. Each line ends with a CR and the fields are separated with a ":". This makes it easy to import the data into EXCEL. It is not possible to import the data back into the software. This must be done by the company Quality-Tools. This function is mainly used for new translations of the software.

7. Special features

The data transfer point is always the keyboard buffer under Windows. This makes an Enter field for text characters and numbers in the program essential.

Data can only be transferred in a Windows program but not, however, in a DOS program working under Windows.

Note: Data can only be imported into a Windows application when the software WINCOM2Key is started and the program to receive the data is in the foreground.

Quality-Tools Messtechnik D-71394 Kernen Max-Eyth-Str. 18

Tel: 07151 35557 Fax: 07151 35558 E-Mail: Mail@Quality-Tools.Info